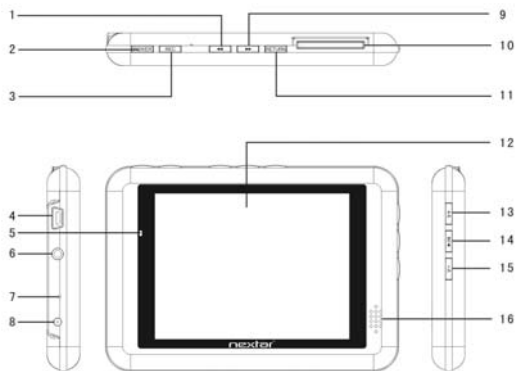


Quick Start Guide

T30

Portable Media Player



PLAYER OVERVIEW



1 Previous	7 Reset	12 TFT display
2 Power	8 Power supply	13 Volume up
3 Record	9 Next	14 Play / Pause
4 USB port	10 SD / MMC card slot	15 Volume down
5 Charging indicator	11 Return	16 Loud speaker
6 Earphone jack		

DESCRIPTION OF BUTTONS

Button	Function	Function in Menu
POWER	Press to turn the <u>player</u> on/off.	
▶/ 	Press to start/pause playback. Press together with REC to hold/unhold player.	Press to enter a selected menu item or to confirm a chosen setting.
REC	In music mode, press to create or release repeat section. In FM mode, press and hold to start FM recording. In E-book mode, press to save/load bookmark. In record mode, press to start/pause voice record. In folders/files navigation mode, press to pop out file delete window. Press together with ▶/ to hold/unhold player.	
RETURN		Press to exit menu Press and hold to return to

	<p>Press to skip to previous/next track.</p> <p>Press and hold to rewind/fast forward within current track.</p> <p>In radio mode, press to search radio channels.</p>	<p>main menu.</p> <p>Press to select a setting or menu item when the items are listed horizontally.</p>
	<p>Press to increase/decrease volume level.</p>	<p>Press to select a setting or menu item when the items are listed vertically.</p>

Download files

Note that this player will build the play list by scanning all files which are sorted by letter order. In Windows 2000 and Windows XP, music with DRM9 should be transferred by Windows Media Player version 9.0 or 10.0 later version (version 10.0 later version is for Windows XP only) to the PMP. Other download operation will probably cause the PMP not to read and play the music files with DRM protection.

Loading DRM protected WMA audio tracks with Windows Media Player 10

- Start the Windows Media Player and select the music library to manage your songs.
- In Windows Media Player 10, select the function "Sync".
- For further advice, please refer to the Windows Media Player FAQs regarding Microsoft® Windows Media DRM.

Copying audio tracks to the player from PC

- Find out your favorite MP3 or WMA music files in "My Computer".
- Use the mouse to select those music files and click those files with the right button of the mouse to select "Copy".

- Find Removable Drive in “My Computer” and enter it, then right click on the mouse to paste those files to the Removable Drive.

Caution: Do not disconnect the player from the PC during transferring data! It will damage the player.

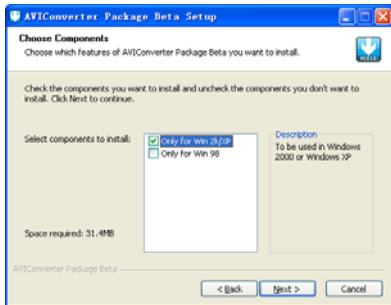
WATCHING VIDEO

Convert Video File

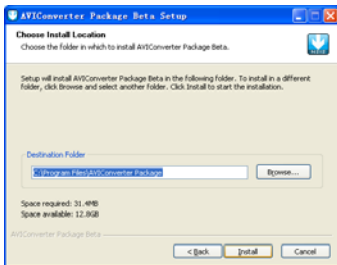
This player only support AVI video format. Other formats such as RM/ VOB/ DAT/ RMVB/ MPG/ MPEG/ MP4/ ASF/ WMV/ MKV can be played after being converted to AVI video format. (AVI converter software is in the bundled CD)

Install the AVI converter

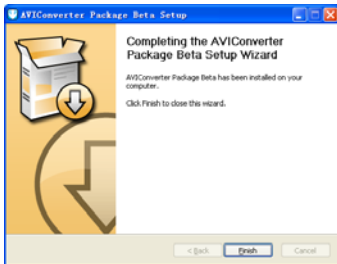
1. Insert the attached installation disk into the CD-ROM, select and run “AVI Converter Package Setup.exe”, enter the installation interface, and then click [Next] to display the following dialogs:



2. Choose “Only for Win 2K/XP” and click Next.
3. After selecting the installation routine, click [Install] to complete installation (shown follow)



4. After the installation is complete, click [Finish] to finish the software installation.

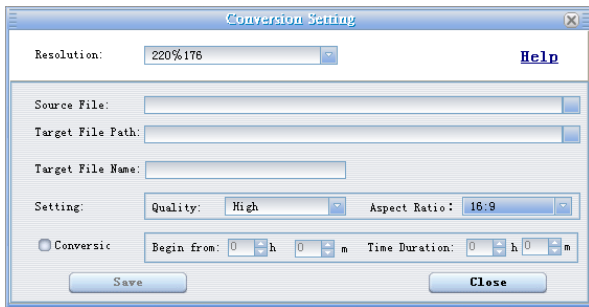


Conversion:

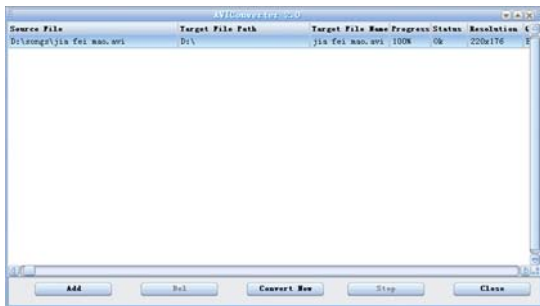
This player can convert rm, rmvb, mpg, mpeg, mp4, asf, wmv, mkv, dat, and vob into AVI video

format via the included video convert software.

1. Run the “AVI Converter 2.0” program and click “Add”, then select your desired video/audio file and the AVI video file routine to be generated, shown as follows:



2. Select and set your desired parameters, click “Save”. After finishing your selections, click “Close” to exit this window and click “Convert Now”. The player will now begin to convert your files to AVI format.



3. After finishing the conversion, click “Close” to exit.
4. The successfully converted AVI video file can now be played in the PMP.

Cautions: Choose 320×240 in resolution. If the size of the AVI file is not 320×240, it will be recognized as an error file format.

PRECAUTIONS AND MAINTENANCE

TAKING PRECAUTIONS

- Before powering on the player, please plug in the earphone to avoid damaging the earphone as well as maintenance of the player. Turn off the player when you stop using it.
- Do not place it near a heat resource or subject to direct sunlight, dust, humidity or rain.
- Do not use it in extra-dry environments to avoid electrostatics.

CLEANING THE DEVICE

- Before cleaning the device, please make sure it is turned off.
- To clean the LCD screen or plastic casing, wipe it with a soft, slightly dampened cloth. Never use any alcohol or diluted detergent to clean the device.
- Never spray or pour liquid directly onto the screen or the casing.